



Sailun Europe
Grosser Hasenpfad 30,
D-60598, Frankfurt am Main

+49 069 2724 0008



@Sailun



@Sailungroup



@sailun_europe

sailuntyre.eu



SAILUN PASSENGER AND LIGHT TRUCK TYRE CATALOGUE

AS | HP | UHP | SUV | HT | AT | MT | LTC | WINTER



sailuntyre.eu



SAILUN GROUP

Stock Code: 601058



Ranked 15th among global tyre manufacturers



Over 13,000 employees worldwide committed to meeting your needs



Our global facilities include 4 R&D centers, 10 sales centers and 7 manufacturing centers, with products sold in over 180 countries and regions

WHY SAILUN ?

GLOBAL INTELLIGENT MANUFACTURING

Sailun has 7 smart tyre production plants located in China, Vietnam and Cambodia. These factories utilize big data cloud platforms tailored to meet tyre production demand and keep pace with the organization's rapid growth. This allows for the real-time optimization and intelligent management of our manufacturing and supply chain networks in order to improve the quality and efficiency of supply chain operations.

LEADING R&D SYSTEM

Sailun has invested heavily in setting up R&D centers in Qingdao (R&D headquarters), Vietnam, Europe and North America that enable us to better understand and meet local user needs. These centers employ cutting-edge technology that establish a sophisticated global R&D network. From market research, product planning, and tyre structure design to product verification and testing throughout the entire development process, the R&D network has the capabilities to develop a full range of products specifically designed to meet market needs.

SOPHISTICATED PRODUCT DEVELOPMENT

Sailun's product development is market oriented in order to develop products that meet customer and consumer demands. Our range of nearly 10,000 products include passenger car, truck and bus, and specialty tyre lines.

ESTABLISHED BRAND

Brand value is not only reflected in the Sailun's product quality, but also in every stage of the product life cycle. For over 20 years Sailun has cultivated a brand that has gained the trust of customers and will continue to invest in building a world-class brand to solidify its standing as an influential global tyre manufacturer.

LOCALIZED CUSTOMER SUPPORT

Sailun continues to maintain the business strategy of 'Think Global, Act Local'. Customer support channels have been established around the world including Toronto, Boston, Germany, Vietnam, Dubai, Brazil and more, and are equipped with professional staff who can provide local technical, sales, and marketing support.

SUSTAINABLE PERFORMANCE

What is EcoPoint³ & Why choose it



A well-dispersed silica is combined with polymer solution of SBR and BR



Utilizing the advanced automated Liquid-Phase Mixing technology compared to conventional dry-mixed silica compounds



Has properties aligned with HIGHEST fire label ratings

Why is it significant



Better filler-polymer interactions



Higher tensile strength



Minimal proportions of impurities



Revolutionary benefits



SIGNIFICANT IMPROVEMENTS

Rolling Resistance
Skid Resistance
Wear Resistance



MAXIMUM ENERGY EFFICIENCY

Use less and travel further



REDUCED CARBON EMISSIONS

Uses more sustainable materials and reduces fuel consumption



LOW-CARBON DEVELOPMENT

From raw materials, manufacturing to product life cycle

PC

ATREZZO ECO	09
ATREZZO ELITE	11
ATREZZO ELITE EV	15
ATREZZO ZSR	17
ATREZZO ZSR2	21
ATREZZO ZSR2 EV	23
ATREZZO ZSR SUV	25
ATREZZO R01 SPORT	27

ALL SEASON

ATREZZO 4SEASONS	31
ATREZZO 4SEASONS PRO	33
ATREZZO 4SEASONS PRO EV	34
COMMERCIO 4 SEASONS	35



SUV

TERRAMAX A/T	39
TERRAMAX CVR	41
TERRAMAX M/T	43

LTC

COMMERCIO PRO	47
---------------	----

WINTER

ENDURE WSL1	51
ICE BLAZER Alpine +	53
ICE BLAZER Alpine EVO1	55
ICE BLAZER Arctic	57
ICE BLAZER Arctic EVO	59
ICE BLAZER Arctic SUV	61
ICE BLAZER WST2 LT	63
ICE BLAZER WST3	65
COMMERCIO ICE	69

PC

ATREZZO ECO	09
ATREZZO ELITE	11
ATREZZO ELITE EV	15
ATREZZO ZSR	17
ATREZZO ZSR2	21
ATREZZO ZSR2 EV	23
ATREZZO ZSR SUV	25
ATREZZO R01 SPORT	27

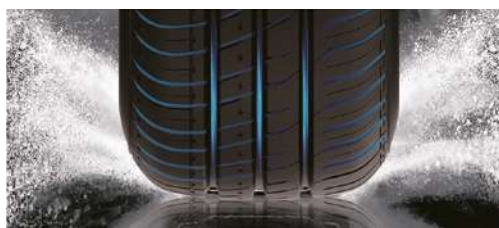




ATREZZO ECO

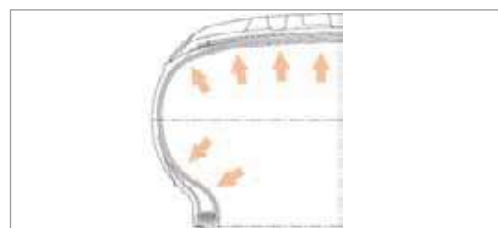
PERFORMANCE RATINGS

Wet Performance:	9
Dry Performance:	9
Comfort:	8
Noise Absorption:	8
Tread Life:	8



WET PERFORMANCE

Three wide main grooves and small lateral grooves that run through to the sidewall effectively enhance wet grip and improve hydroplaning resistance.



FUEL ECONOMY

Adjusted the internal structure of the tyre to optimize the distribution of contact stress which improves comfort and lowers rolling resistance.



- ⚡ Added a lightning pattern in the tread for greater aesthetics.

EXCEPTIONAL HANDLING

Two center ribs and reinforced grooves help improve tyre rigidity for excellent handling. Effectively reduces rolling resistance and improves fuel economy.

IMPROVED GRIP

Solid large block shoulder design provides exceptional grip to ensure vehicle stability.

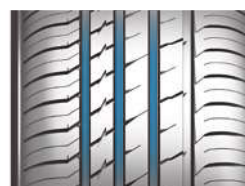
Rim	Size	LI	SR	PR	XL	Fuel efficiency	Wet Grip	Ext. Rolling Noise	Noise Grade	M+S	3PMSF	EPREL Code
13	155/65R13	73	T			D	B	70	B			444076
13	155/70R13	75	T			D	B	70	B			444087
13	155/80R13	79	T			D	B	70	B			444099
13	165/65R13	77	T			D	B	70	B			444165
13	165/70R13	79	T			D	B	70	B			444218
13	165/80R13	83	T			D	B	70	B			444243
13	175/65R13	80	T			D	B	70	B			444301
13	175/70R13	82	T			D	B	70	B			444376
13	185/70R13	86	T			D	B	70	B			444411
14	155/65R14	75	T			D	B	70	B			444084
14	155/70R14	77	H			D	B	70	B			444092
14	165/55R14	72	V			D	B	70	B			444118
14	165/60R14	75	H			D	B	70	B			444131
14	165/60R14	75	T			D	B	70	B			444139
14	165/65R14	79	T			D	B	70	B			444182
14	165/70R14	81	T			D	B	70	B			444225
14	165/70R14	85	T		XL	D	B	70	B			444234
14	175/65R14	82	T			D	B	70	B			444309
14	175/65R14	82	H			D	B	70	B			444318
14	175/65R14	86	T		XL	C	B	70	B			444331
14	175/70R14	84	T			D	B	70	B			444382
14	175/70R14	88	T		XL	C	B	70	B			444386
14	175/80R14	88	T			C	B	70	B			444389
14	185/60R14	82	H			D	B	70	B			444394
14	185/65R14	86	H			D	B	70	B			444400
14	185/65R14	86	T			D	B	70	B			444405
14	185/70R14	88	T			D	B	70	B			444416
14	185/70R14	88	H			D	B	70	B			444422
14	195/60R14	86	H			C	B	71	B			444427
14	195/65R14	89	H			C	B	70	B			444433
14	195/70R14	91	H			D	B	70	B			444440
14	205/70R14	95	H			C	B	71	B			444444
15	145/65R15	72	T			D	B	70	B			444056
15	155/60R15	74	T			D	B	70	B			444067
15	165/50R15	72	V			D	B	70	B			444104
15	165/55R15	75	V			D	B	70	B			444126
15	165/60R15	77	H			C	B	70	B			746882
15	165/65R15	81	T			D	B	70	B			444188
15	165/65R15	81	H			D	B	70	B			444198
15	175/55R15	77	T			D	B	70	B			444277
15	175/60R15	81	V			D	B	70	B			444285
15	175/60R15	81	H			D	B	70	B			444293
15	175/65R15	84	H			D	B	70	B			444336
15	175/65R15	88	T		XL	C	B	70	B			444367
15	175/65R15	88	H		XL	C	B	70	B			444372



ATREZZO ELITE

PERFORMANCE RATINGS

Wet Performance:	9
Dry Performance:	9
Comfort:	8
Noise Absorption:	8
Tread Life:	8



WET PERFORMANCE

Four wide main grooves and tread sipe design effectively drain water to improve wet grip.



ASYMMETRIC TREAD

Asymmetric tread design whose inner tread elements help provide efficient drainage, and the outer tread elements offer exceptional handling to obtain optimal driving performance.

A strip within the outer groove not only makes the outer block more robust, but also improves the handling performance.



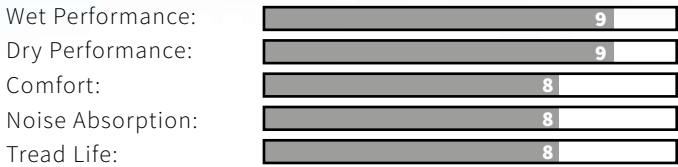
Simple staggered layer groove design makes the pattern more dynamic.

Rim	Size	LI	SR	PR	XL	Fuel efficiency	Wet Grip	Ext. Rolling Noise	Noise Grade	M+S	3PMSF	EPREL Code
14	185/55R14	80	H			D	B	70	B			444469
15	185/55R15	82	H			D	B	70	B			444480
15	185/55R15	82	V			D	B	70	B			444485
15	185/60R15	84	H			D	A	70	B			444520
15	185/60R15	84	T			D	A	70	B			444541
15	185/60R15	88	H		XL	D	A	70	B			444548
15	185/60R15	88	T		XL	D	A	70	B			444572
15	185/65R15	88	H			D	B	70	B			444595
15	185/65R15	88	T			D	B	70	B			444605
15	185/65R15	92	T		XL	C	B	70	B			444644
15	195/50R15	82	H			D	B	70	B			444651
15	195/50R15	82	V			D	B	70	B			444663
15	195/55R15	85	H			D	B	70	B			444774
15	195/55R15	85	V			D	B	70	B			444792
15	195/60R15	88	H			D	B	70	B			444860
15	195/60R15	88	V			D	B	70	B			444989
15	195/65R15	91	H			C	B	70	B			445051
15	195/65R15	91	T			C	B	70	B			445785
15	195/65R15	91	V			C	B	70	B			445790
15	195/65R15	95	H		XL	C	B	70	B			445793
15	205/50R15	86	V			D	B	70	B			445804
15	205/55R15	88	V			D	B	70	B			445810
15	205/60R15	91	H			C	B	70	B			445831
15	205/60R15	91	V			C	B	70	B			445836
15	205/60R15	95	H		XL	C	B	70	B			445894
15	205/65R15	94	H			C	B	70	B			445942
15	205/65R15	94	V			C	B	70	B			445951
15	205/65R15	99	T		XL	C	B	70	B			445977
15	215/65R15	96	H			C	B	70	B			446048
15	215/65R15	96	T			C	B	70	B			446052
15	215/65R15	100	H		XL	B	B	70	B			446061
15	225/60R15	96	V			C	B	70	B			446143

ATREZZO

ELITE

PERFORMANCE RATINGS



Rim	Size	LI	SR	PR	XL	Fuel efficiency	Wet Grip	Ext. Rolling Noise	Noise Grade	M+S	3PMSF	EPREL Code
16	185/50R16	81	V			D	B	70	B			444464
16	185/55R16	83	H			D	B	70	B			444490
16	185/55R16	83	V			D	B	70	B			444504
16	185/55R16	87	V		XL	D	B	70	B			444513
16	195/50R16	84	V			D	B	70	B			444681
16	195/50R16	88	V		XL	D	B	70	B			444744
16	195/50R16	84	H			D	B	70	B			444715
16	195/55R16	87	H			D	B	70	B			444806
16	195/55R16	87	V			D	B	70	B			444821
16	195/55R16	91	V		XL	C	B	70	B			444835
16	195/60R16	89	H			D	B	70	B			445004
16	195/60R16	89	V			D	B	70	B			445021
16	195/65R16	92	V			C	B	70	B			445800
16	205/45R16	87	W		XL	C	B	70	B			730219
16	205/50R16	87	V			D	B	70	B			445808
16	205/55R16	91	H			C	B	70	B			445814
16	205/55R16	91	V			C	B	70	B			445818
16	205/55R16	91	W			C	B	70	B			445819
16	205/55R16	94	V		XL	C	B	70	B			445823
16	205/60R16	92	H			C	B	70	B			445899
16	205/60R16	92	V			C	B	70	B			445909
16	205/60R16	96	H		XL	C	B	70	B			445919
16	205/60R16	96	V		XL	C	B	70	B			445932
16	205/65R16	95	V			C	B	70	B			445978
16	215/45R16	90	V		XL	B	A	70	B			746883
16	215/55R16	97	H		XL	C	B	70	B			445980
16	215/55R16	97	W		XL	C	B	70	B			445986

Rim	Size	LI	SR	PR	XL	Fuel efficiency	Wet Grip	Ext. Rolling Noise	Noise Grade	M+S	3PMSF	EPREL Code
16	215/60R16	95	H			C	B	70	B			446000
16	215/60R16	95	V			C	B	70	B			446014
16	215/60R16	99	H		XL	C	B	70	B			446021
16	215/60R16	99	T		XL	C	B	70	B			446027
16	215/60R16	99	V		XL	C	B	70	B			446034
16	215/65R16	98	H			C	B	70	B			446068
16	215/65R16	102	V		XL	C	B	70	B			446073
16	225/50R16	96	W		XL	C	B	70	B			446118
16	225/55R16	99	V		XL	C	B	70	B			446129
16	225/60R16	98	V			C	C	70	B			446150
16	225/60R16	98	W			C	C	70	B			446154
16	225/60R16	102	V		XL	C	C	70	B			446162
16	225/65R16	100	V			C	C	70	B			446188
16	235/60R16	100	W			C	C	70	B			446201
17	205/55R17	95	V		XL	B	B	70	B			445826
17	215/55R17	94	V			C	B	70	B			445988
17	215/60R17	96	V			C	B	70	B			446042
17	215/65R17	99	V			C	B	70	B			446080
17	225/50R17	94	V			C	B	70	B			446124
17	225/60R17	99	V			C	C	70	B			446167
17	225/65R17	102	V			C	C	70	B			446192
17	235/55R17	99	V			C	B	70	B			446197
17	235/55R17	103	V		XL	C	B	70	B			446198
17	235/60R17	102	V			C	C	70	B			446213
17	235/65R17	108	H		XL	C	C	70	B			446215
18	215/55R18	99	V		XL	B	B	70	B			445995
18	225/60R18	104	W		XL	B	C	70	B			446184



ATREZZO ELITE EV



PERFORMANCE RATINGS

Energy Efficiency:	10
Braking:	8
Noise Reduction:	9
Comfort:	9
Handling:	7
Winter:	7
Wear Resistance:	9

The **ELITE EV** is the all new EV specific car and MPV tyre from Sailun. Through the use of the revolutionary technology EcoPoint³, ELITE EV offers exceptional energy efficiency for EVs, a tread designed for an exceptionally quiet drive, and improved driving safety.



ENERGY SAVINGS

Equipped with the proprietary EcoPoint³ technology compound and a meticulously designed tread contour design this EV specific tyre effectively reduces overall rolling resistance that helps to reduce range anxiety and ensure longer mileage.



DRIVING COMFORT

The tread contour improves the tyre's contact footprint for a more even, stable drive while the EcoPoint³ tread compound absorbs tyre-to-ground reverberations to ensure exceptional driving comfort.

NOISE REDUCTION

The soft tread, optimized tread pitch design, and closed shoulder effectively reduce noise vibrations.

SAFETY

The wide tyre footprint, varied tread blocks and sturdy tread compound effectively improve braking and handling performance for overall better driving safety.

Rim	Size	LI	SR	PR	XL	Fuel efficiency	Wet Grip	Ext. Rolling Noise	Noise Grade	M+S	3PMSF	EPRE Code
16	195/60R16	89	H									
16	205/55R16	94	V		XL							
16	205/60R16	96	V		XL							
17	205/50R17	93	W		XL							
17	215/45R17	91	W		XL							
17	215/50R17	95	W		XL							
17	215/55R17	98	W		XL							
17	215/60R17	96	H									
17	225/45R17	94	W		XL							
17	225/55R17	101	W		XL							
18	215/55R18	99	V		XL							
18	235/55R18	104	V		XL							



ATREZZO ZSR



PERFORMANCE RATINGS

9

9

8

9

8

The new generation **ATREZZO ZSR** is engineered to deliver precise wet and dry handling performance. With an asymmetrical tread design and enhanced tread rubber formula, Atrezzo ZSR rises to the challenge and provides exceptional performance on the street and on the highway.



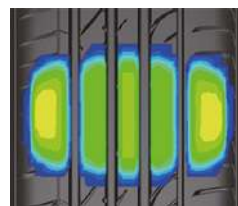
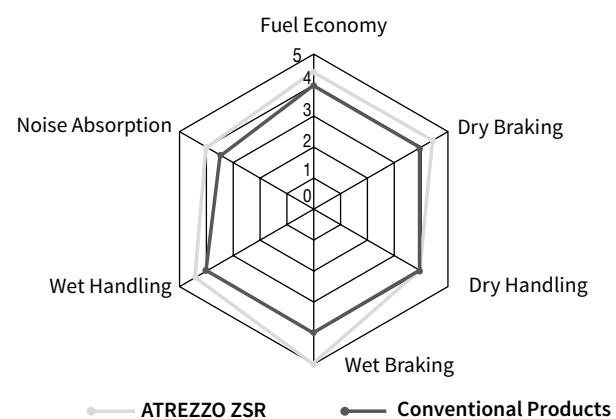
NOISE EMISSION

The various groove angles evenly distribute vibrations generated while running to reduce noise emissions. The design has been measured to reduce noise emissions by about 3%.



EXCELLENT DRAINAGE PERFORMANCE

Grooves with varying widths efficiently drain water to reduce hydroplaning and improve fuel efficiency.



LONGER TREAD LIFE

Through our testing, we have ensured greater driving stability and promoted uniform wear by increasing the tyre's ground contact area by 6%.

Rim	Size	LI	SR	PR	XL	Fuel efficiency	Wet Grip	Ext. Rolling Noise	Noise Grade	M+S	3PMSF	EPREL Code
15	195/45R15	78	V			D	B	70	B			446315
15	195/50R15	82	V			D	B	70	B			446328
16	195/40ZR16	80	W		XL	D	B	71	B			446306
16	195/45R16	84	V		XL	D	B	71	B			446321
16	195/55RF16	87	V			D	B	71	B			446337
16	205/45R16	87	Y		XL	D	B	71	B			447531
16	205/50ZR16	87	W			D	B	70	B			446392
16	205/55ZR16	91	W			D	B	70	B			446424
16	205/55ZRF16	91	W			D	B	70	B			446438
16	215/55ZR16	97	W		XL	C	B	71	B			446658
16	225/55ZR16	99	W		XL	C	B	71	B			447454
17	195/40R17	81	V		XL	D	B	71	B			446293
17	205/40ZR17	84	Y		XL	D	B	71	B			447530
17	205/45RF17	88	W		XL	D	B	71	B			446370
17	205/45ZR17	88	Y		XL	D	B	71	B			447533
17	205/50ZR17	93	W		XL	D	B	71	B			446400
17	205/50ZRF17	89	W			D	B	71	B			446419
17	215/35ZR17	83	Y		XL	D	B	71	B			447535
17	215/40ZR17	87	Y		XL	D	B	71	B			447537



HIGH SPEED STABILITY

The central rib pattern improves high speed stability for improved driving comfort.

CORNERING

The reinforced shoulder design improves grip for effective cornering capabilities.

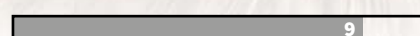


ATREZZO ZSR

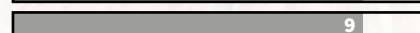


PERFORMANCE RATINGS

Wet Performance:



Dry Performance:



Driving Comfort:



Noise Absorption:



Tread Life:



Rim	Size	LI	SR	PR	XL	Fuel efficiency	Wet Grip	Ext. Rolling Noise	Noise Grade	M+S	3PMSF	EPREL Code
17	215/45ZR17	91	Y		XL	D	B	71	B			447539
17	215/50R17	95	V		XL	D	B	71	B			446613
17	215/50ZR17	95	W		XL	D	B	71	B			446646
17	215/55ZR17	98	W		XL	D	B	71	B			446671
17	225/45ZR17	94	Y		XL	D	B	71	B			447546
17	225/45ZRF17	91	Y			D	B	71	B			447449
17	225/50ZR17	98	Y		XL	C	B	71	B			447547
17	225/50ZRF17	94	W			D	B	71	B			447452
17	225/55R17	101	V		XL	C	B	71	B			447453
17	225/55ZR17	101	W		XL	C	B	71	B			447455
17	225/55ZRF17	97	Y			D	B	71	B			447456
17	235/45ZR17	97	Y		XL	D	B	71	B			447549
17	245/40ZR17	95	Y		XL	D	B	71	B			447555
17	245/45ZR17	99	Y		XL	C	B	71	B			447560
18	215/35ZR18	84	Y		XL	D	B	71	B			447536
18	215/40R18	89	V		XL	D	B	71	B			446515
18	215/45ZR18	93	Y		XL	D	B	71	B			446591
18	225/35ZR18	87	Y		XL	D	B	71	B			447540
18	225/40ZR18	92	Y		XL	D	B	71	B			447544
18	225/40ZRF18	92	Y		XL	D	B	71	B			447427
18	225/45ZR18	95	Y		XL	D	B	71	B			447448
18	225/50ZR18	95	Y			D	B	70	B			447548
18	235/40ZR18	95	Y		XL	D	B	71	B			447460
18	235/45ZR18	98	Y		XL	C	B	71	B			447551

* Sailun Atrezzo ZSR, published in August 2021 on autobild.de.

Rim	Size	LI	SR	PR	XL	Fuel efficiency	Wet Grip	Ext. Rolling Noise	Noise Grade	M+S	3PMSF	EPREL Code
18	235/50ZR18	101	Y		XL	C	B	71	B			447464
18	245/40ZR18	97	Y		XL	D	B	71	B			447557
18	245/40ZRF18	97	Y		XL	D	B	71	B			447471
18	245/45ZR18	100	Y		XL	D	B	71	B			447561
18	245/45ZRF18	100	W		XL	D	B	71	B			447480
18	245/50ZRF18	100	Y			D	B	71	B			601450
18	255/35ZR18	94	Y		XL	D	B	72	B			447562
18	255/35ZRF18	90	Y			D	B	72	B			447497
18	255/45ZR18	103	Y		XL	C	B	72	B			447564
18	265/35ZR18	97	Y		XL	D	B	72	B			447566
19	215/35ZR19	85	Y		XL	D	B	71	B			446493
19	225/35ZR19	88	Y		XL	D	B	71	B			447542
19	235/35ZR19	91	Y		XL	D	B	71	B			447458
19	245/35ZR19	93	Y		XL	D	B	71	B			447553
19	245/40ZR19	98	Y		XL	C	B	71	B			447559
19	245/40ZRF19	98	Y		XL	D	B	71	B			447473
19	255/35ZR19	96	Y		XL	D	B	72	B			447486
19	275/30ZR19	96	Y		XL	D	B	72	B			447511
19	275/35ZR19	96	Y			D	B	71	B			447569
19	275/35ZRF19	100	Y		XL	D	B	71	B			447525
20	225/35ZR20	90	Y		XL	D	B	71	B			446721
20	245/35ZR20	95	Y		XL	D	B	71	B			447467
20	255/35ZR20	97	Y		XL	D	B	72	B			447494
20	275/30ZR20	97	Y		XL	D	B	72	B			447517



ULTRA HIGH PERFORMANCE TYRE



ATREZZO ZSR2



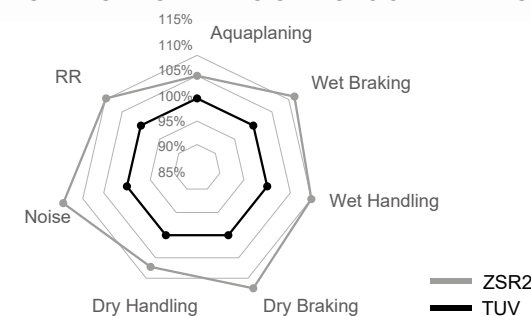
PERFORMANCE RATINGS

Battery Life:	10
Wet Performance:	9
Ride Comfort:	8
Quietness:	10
Tread Life:	8

The **UHP Atrezzo ZSR2** is the next generation of the critically acclaimed Atrezzo ZSR. This next generation model utilizes Sailun's proprietary EcoPoint³ rubber compound technology, which is designed to offer exceptional handling and precision, leading wet grip performance, greater wear resistance for a longer tyre life, and significantly reduced breaking distances.

- Exceptional wet grip label A
- Superior handling and braking
- UHP summer tyre from 205 – 275 mm

SL VS TUV RESULTS COMPARISON



INTEGRATED BLOCK DESIGN

Outer tread blocks use an integrated block design that offers greater durability.



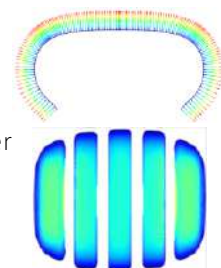
EXCEPTIONAL WET GRIP

Equipped with EcoPoint³ technology, the ZSR2 offers exceptional grip in wet weather applications for overall improved driving safety.



LARGE FOOTPRINT

Tread blocks employ a chamfer design which increases the tyre's ground contact area to improve handling stability.



EXCEPTIONAL HANDLING

The optimized contour design effectively distributes ground pressure to provide exceptional handling performance.

Rim	Size	LI	SR	PR	XL	Fuel efficiency	Wet Grip	Ext. Rolling Noise	Noise Grade	M+S	3PMSF	EPREL Code
17	205/45ZR17	88	W		XL	B	A	69	A			1418542
17	205/50ZR17	93	W		XL	B	A	69	A			1418543
17	215/50ZR17	95	W		XL	B	A	69	A			1418544
17	215/55ZR17	98	W		XL	B	A	69	A			1418545
17	225/45ZR17	94	Y		XL	B	A	69	A			1418547
17	225/50ZR17	98	W		XL	B	A	69	A			1418548
17	225/55ZR17	101	W		XL	B	A	69	A			1418554
17	235/45ZR17	97	Y		XL	B	A	69	A			1418556
18	225/40ZR18	92	Y		XL	B	A	69	A			1418558
18	225/45ZR18	95	Y		XL	B	A	69	A			1418559
18	235/40ZR18	95	Y		XL	B	A	69	A			1418568
18	235/45ZR18	98	Y		XL	B	A	69	A			1418561
18	245/40ZR18	97	Y		XL	B	A	69	A			1418562
18	245/45ZR18	100	Y		XL	B	A	69	A			1418564
19	255/35ZR19	96	Y		XL	B	A	69	A			1418573
20	245/35ZR20	95	Y		XL	B	A	69	A			1418577
20	275/30ZR20	97	Y		XL	B	A	69	A			1418578



ULTRA HIGH PERFORMANCE TYRE



ATREZZO ZSR2 EV

PERFORMANCE RATINGS

Battery Life:	10
Wet Performance:	9
Ride Comfort:	8
Quietness:	10
Tread Life:	8



The **UHP Atrezzo ZSR2 EV** is the latest addition to the ZSR range, specifically engineered for electric and hybrid vehicles. EcoPoint³ rubber compound technology delivers exceptionally low rolling resistance for energy efficiency, strengthened tyre body that helps to handle the instant torque of electric vehicles, effectively improves stopping distances, and offers improved noise cancellation for better driving comfort.

- Extends range of EVs and Hybrids
- Superior noise reduction
- UHP summer tyre from 205 – 255 mm



INTEGRATED BLOCK DESIGN

Outer tread blocks use an integrated block design that offers greater durability.



EXCEPTIONAL WET GRIP

Equipped with EcoPoint³ technology, the ZSR2 offers exceptional grip in wet weather applications for overall improved driving safety.

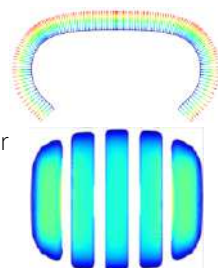
REDUCE RANGE ANXIETY

ZSR2 EV is equipped with the revolutionary EcoPoint³ technology which is designed to effectively reduce rolling resistance, which in turn helps to increase the range of electric vehicles. It's high efficiency design not only improves overall driving experience, but also reduces 'range anxiety' for drivers.



LARGE FOOTPRINT

Tread blocks employ a chamfer design which increases the tyre's ground contact area to improve handling stability.



EXCEPTIONAL HANDLING

The optimized contour design effectively distributes ground pressure to provide exceptional handling performance.

Rim	Size	LI	SR	PR	XL	Fuel efficiency	Wet Grip	Ext. Rolling Noise	Noise Grade	M+S	3PMSF	EPREL Code
17	205/45ZR17	88	W		XL	B	A	69	A			
18	225/45ZR18	95	Y		XL	B	A	69	A			
18	235/45ZR18	98	W		XL	B	A	69	A			
18	245/45ZR18	100	W		XL	B	A	69	A			1422060



ULTRA HIGH PERFORMANCE SUV TYRE

ATREZZO ZSR SUV

PERFORMANCE RATINGS

Wet Performance:	9
Dry Performance:	9
Comfort:	8
Noise Absorption:	9
Tread Life:	8

DRIVING COMFORT

Groove pattern improves driving stability and works with the optimized tread pitch arrangement to reduce noise emissions.

OVERALL PERFORMANCE

The asymmetric pattern design boasts two strengths; the inner sidewall is adept at draining water to increase wet performance, and outside sidewall with its large tread blocks improves grip while cornering.

HIGH-SPEED PERFORMANCE

Wide tread surface design; when in contact with the ground the specially structured crown evenly distributes force to achieve precise control at high speeds.

FUEL EFFICIENCY

Tread compound effectively improves wet driving capabilities and rolling resistance for improved fuel efficiency.

Rim	Size	LI	SR	PR	XL	Fuel efficiency	Wet Grip	Ext. Rolling Noise	Noise Grade	M+S	3PMSF	EPREL Code
18	225/55R18	98	V			D	B	70	B			448143
18	235/55R18	100	V			C	B	70	B			448360
18	235/60R18	107	V		XL	C	B	70	B			448376
18	255/55R18	109	V		XL	C	B	72	B			448546
18	255/60R18	112	V		XL	C	B	72	B			448768
19	225/40ZR19	93	Y		XL	D	B	70	B			448100
19	225/45ZR19	96	Y		XL	D	B	70	B			448128
19	225/55R19	99	V			D	B	70	B			448268
19	235/45ZR19	99	Y		XL	D	B	70	B			448286
19	245/45ZR19	102	Y		XL	C	B	70	B			448473
19	255/50ZR19	107	Y		XL	C	B	72	B			448509
19	255/55ZR19	111	W		XL	C	B	72	B			448559
19	265/50ZR19	110	Y		XL	C	B	72	B			448629
19	275/40ZR19	105	Y		XL	C	A	72	B			448638
19	285/45ZR19	111	Y		XL	C	A	72	A			448750
20	245/45ZR20	103	Y		XL	C	B	71	B			448483
20	255/45ZR20	105	Y		XL	C	B	72	B			448496
20	255/50ZR20	109	Y		XL	C	B	72	B			448533
20	255/55ZR20	110	Y		XL	C	B	72	B			448571
20	265/45ZR20	108	Y		XL	C	B	72	B			448591
20	265/50R20	111	V		XL	C	B	72	B			448601
20	275/40ZR20	106	Y		XL	C	A	72	B			448660
20	275/45ZR20	110	Y		XL	C	A	72	B			448674
20	275/50ZR20	113	W		XL	B	A	72	B			448694
20	275/55R20	117	V		XL	B	B	72	B			448711
20	275/60R20	119	V		XL	B	B	72	B			448731
20	285/50R20	116	V		XL	B	A	72	A			448759
20	315/35ZR20	110	Y		XL	C	A	74	B			448766
21	275/45ZR21	110	Y		XL	C	A	72	B			448684
21	295/35ZR21	107	Y		XL	C	A	72	A			448761
21	295/40ZR21	111	Y		XL	C	A	72	A			448762
22	265/35ZR22	102	Y		XL	C	B	72	B			448581
22	275/40ZR22	108	Y		XL	C	A	72	B			448666
22	285/35ZR22	106	Y		XL	C	A	72	A			448740
22	295/40ZR22	112	Y		XL	C	A	72	A			448764



Dry Handling:	10
Dry Braking:	10
Wet Handling:	9
Wet Braking:	9
Comfort:	7

High-end product with unique sidewall design; employs curved incisions which fully reflects its sporty and urban look.

Wide tread and wave-like central rib design ensure greater high-speed stability.

Sleek and wide shoulder grooves effectively drain water.

Big shoulder blocks improve stability and handling to meet performance needs.

Curved grooves improve abrasion resistance and the rounded corners on the tread block edges protects the tyre from damage.



Rim	Size	LI	SR	PR	XL	Fuel efficiency	Wet Grip	Ext. Rolling Noise	Noise Grade	M+S	3PMSF	EPREL Code
15	195/50R15	82	V									
15	195/50R15	82	V			D	C	71	B			1213305
15	195/55R15	89	V		XL							
15	195/55R15	89	V		XL	D	C	71	B			1213314
17	215/45ZR17	91	W		XL							
17	215/45ZR17	91	W		XL	D	C	71	B			1213319
18	225/40ZR18	92	W		XL							
18	225/40ZR18	92	W		XL	D	C	71	B			1213322
18	235/40R18	95	W		XL							
18	235/40R18	95	W		XL	D	C	71	B			1213323
18	255/50R18	106	V		XL							
18	255/50R18	106	V		XL	D	C	72	B			1213325
18	255/55R18	109	V		XL							
18	255/55R18	109	V		XL	D	C	72	B			1213336
18	265/35R18	97	W		XL							
18	265/35R18	97	W		XL	D	C	72	B			1213330

ALL SEASON

ATREZZO 4SEASONS	31
ATREZZO 4SEASONS PRO	33
ATREZZO 4SEASONS PRO EV	34
COMMERCIO 4 SEASONS	35

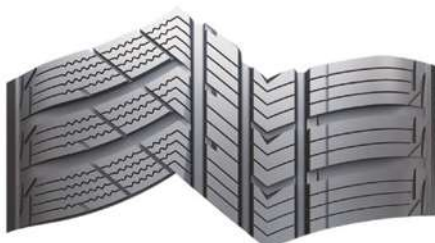


ALL-SEASON PERFORMANCE TYRE

ATREZZO 4 SEASONS

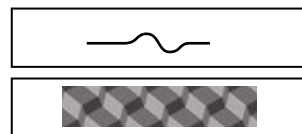
PERFORMANCE RATINGS

Wet Performance:	8
Dry Performance:	8
Comfort:	8
Noise Absorption:	7
Tread Life:	8
Snow Performance:	8
Ice Performance:	7



FOUR SEASON PERFORMANCE

The unique 4 season asymmetric pattern is designed for use all year round. Zigzagged sipe and block design maximize grip in water and snow. The three main grooves quickly and effectively drain water and snow for a safer driving experience.



ENHANCED PERFORMANCE

Newly introduced 3-dimensional grooves and sipes ensure optimal performance for the entire life of the tyre.



Rim	Size	LI	SR	PR	XL	Fuel efficiency	Wet Grip	Ext. Rolling Noise	Noise Grade	M+S	3PMSF	EPREL Code
13	155/65R13	73	T			D	C	71	B	YES	YES	428739
13	155/70R13	75	T			D	C	71	B	YES	YES	428742
13	155/80R13	79	T			D	C	71	B	YES	YES	428745
14	155/65R14	75	T			D	C	71	B	YES	YES	428743
14	165/65R14	79	T			D	C	71	B	YES	YES	428746
14	165/70R14	81	T			D	C	71	B	YES	YES	428716
14	175/65R14	82	T			D	C	71	B	YES	YES	428718
14	185/60R14	82	H			D	C	71	B	YES	YES	428722
14	185/65R14	86	T			D	C	71	B	YES	YES	428723
15	155/60R15	74	T			D	C	71	B	YES	YES	428740
15	165/65R15	81	T			C	C	71	B	YES	YES	428748
15	175/55R15	77	T			D	C	71	B	YES	YES	428744
15	175/65R15	88	H		XL	D	C	71	B	YES	YES	428719
15	185/55R15	82	H			D	C	71	B	YES	YES	428721
15	185/60R15	88	H		XL	C	C	71	B	YES	YES	623147
15	185/65R15	88	T			D	C	71	B	YES	YES	428725
15	185/65R15	92	H		XL	D	C	71	B	YES	YES	428726
15	195/50R15	82	V			C	C	72	B	YES	YES	428749
15	195/55R15	85	H			D	C	72	B	YES	YES	428727
15	195/60R15	88	H			D	C	72	B	YES	YES	428732
15	195/65R15	91	H			D	C	72	B	YES	YES	623140
15	195/65R15	95	T		XL	D	C	72	B	YES	YES	623142
15	195/65R15	91	T			D	C	72	B	YES	YES	623143
15	205/65R15	99	V		XL	C	C	72	B	YES	YES	1258098
16	195/45R16	84	V		XL	D	C	72	B	YES	YES	428750
16	195/50R16	88	V		XL	C	C	72	B	YES	YES	1258097
16	195/55R16	87	V			D	C	72	B	YES	YES	428728
16	195/55R16	91	V		XL	D	C	72	B	YES	YES	428730
16	205/55R16	91	H			D	C	72	B	YES	YES	623146
16	205/55R16	94	V		XL	D	C	72	B	YES	YES	623150
16	205/60R16	96	V		XL	D	C	72	B	YES	YES	428733
16	215/55R16	93	H			D	C	72	B	YES	YES	428734
16	215/55R16	97	V		XL	C	C	72	B	YES	YES	428735
16	215/60R16	99	H		XL	C	C	72	B	YES	YES	428736
16	215/65R16	102	V		XL	C	C	72	B	YES	YES	428752
16	225/55R16	99	W		XL	C	C	72	B	YES	YES	428738
17	225/45R17	94	W		XL	D	C	72	B	YES	YES	623152
17	225/45ZR17	94	Y		XL	D	C	72	B	YES	YES	704179



ALL-SEASON ULTRA HIGH PERFORMANCE TYRE

ATREZZO 4 SEASONS PRO

PERFORMANCE RATINGS

Wet Performance:	9
Dry Performance:	8,5
Comfort:	8
Noise Absorption:	7
Tread Life:	9
Snow Performance:	8,5
Ice Performance:	7,5

The **Atrezzo 4Seasons Pro** is Sailun's all new All-Season SUV tyre that offers wet braking and traction performance comparable to top brands. Equipped with the proprietary EcoPoint³ compound technology, the tyre offers the newest generation of sustainable performance along with performance improvements in rolling resistance, wear, noise, and grip.



HANDLING AND BRAKING PERFORMANCE

This asymmetric tread pattern with an optimized contour and tread groove design effectively distributes ground pressure for improved stability on wet road surfaces. The tread's inner tread elements are designed to effectively funnel water out of the tyre while the outer tread elements specialize in improving grip and handling all year around. Sipes located on the shoulder blocks improve grip for precision turning and braking performance.



WINTER WEATHER PERFORMANCE

The tread pattern utilizes multi-angle sipes and grooves which help to efficiently expel water and snow from the tyre. Tread block edges are equipped with angled edges which bite into snow and improve overall tread footprint for improved traction and braking performance.



ATREZZO 4 SEASONS PRO EV

EV sizes of the 4Season Pro utilize a strengthened tread carcass that prepare the tyre for the instant torque of electric vehicles caused when taking off or braking. This also improves overall handling and precision turning for an exceptional and safe driving experience.

Rim	Size	LI	SR	PR	XL	Fuel efficiency	Wet Grip	Ext. Rolling Noise	Noise Grade	M+S	3PMSF	EPREL Code
17	205/45ZR17	88	Y		XL	C	B	72	B	YES	YES	1399899
17	205/45ZR17	88	W		XL	C	B	72	B	YES	YES	1419140
17	215/45ZR17	91	Y		XL	C	B	72	B	YES	YES	1399979
17	215/50ZR17	95	W		XL	C	B	72	B	YES	YES	1399888
17	215/50ZR17	95	W		XL	C	B	72	B	YES	YES	1419143
17	215/55R17	98	W		XL	B	B	72	B	YES	YES	1399880
17	215/55R17	98	W		XL	B	B	72	B	YES	YES	1419150
17	215/60R17	100	V		XL	B	B	72	B	YES	YES	1399982
17	225/55ZR17	101	W		XL	B	B	72	B	YES	YES	1400056
17	225/60R17	103	V		XL	B	B	72	B	YES	YES	1399997
17	225/65R17	106	V		XL	B	B	72	B	YES	YES	1400004
17	235/45ZR17	97	W		XL	C	B	72	B	YES	YES	1399948
17	235/55ZR17	103	W		XL	B	B	72	B	YES	YES	1399935
18	215/55R18	99	V		XL	B	B	72	B	YES	YES	1399988
18	215/55R18	99	V		XL	B	B	72	B	YES	YES	1419156
18	225/40ZR18	92	Y		XL	C	B	72	B	YES	YES	1399850
18	225/55R18	102	V		XL	B	B	72	B	YES	YES	1399896
18	235/45ZR18	98	W		XL	B	B	72	B	YES	YES	1399941
18	235/45ZR18	98	W		XL	C	B	72	B	YES	YES	1419153
18	235/55R18	104	V		XL	B	B	72	B	YES	YES	1399994
18	235/60R18	107	W		XL	B	B	72	B	YES	YES	1399999
18	235/60R18	103	W			B	B	72	B	YES	YES	1419160
18	245/40ZR18	97	W		XL	B	B	72	B	YES	YES	1399996
18	245/45ZR18	100	W		XL	B	B	72	B	YES	YES	1399945
18	255/55R18	109	W		XL	A	B	72	B	YES	YES	1399863
19	225/55R19	103	W		XL	B	B	72	B	YES	YES	1399908
19	235/55R19	105	W		XL	B	B	72	B	YES	YES	1399938
19	235/55R19	105	W		XL	B	B	72	B	YES	YES	1419146



COMMERCIO 4 SEASONS

PERFORMANCE RATINGS

Dry:	8
Wet:	8
Snow:	8
Driving Comfort:	7
Tread Life:	8



WET PERFORMANCE

3D grooves and sipes provide excellent braking and traction performance on dry, wet, and snowy roads.



4 SEASON PERFORMANCE

The unique, arrow-shaped tread block pattern with large grooves is designed for use year-round.

TYRE LIFE

The temperature-proof, grip and wear optimized tread compound provides high mileage and improved wear resistance.

IMPROVED CARRYING CAPACITY

Strong tiye casing design provides a reinforced load capacity.

INCREASED SAFETY

Sidewall protection band offers extra protection from curb impacts and sidewall damage.



Rim	Size	LI	SR	PR	XL	Fuel efficiency	Wet Grip	Ext. Rolling Noise	Noise Grade	M+S	3PMSF	EPREL Code
15	195/70R15C	104/102	T	8PR		D	B	72	B	YES	YES	439323
15	215/70R15C	109/107	S	8PR		C	A	72	B	YES	YES	439326
15	225/70R15C	112/110	S	8PR		C	A	72	B	YES	YES	439331
16	195/60R16C	99/97	H	6PR		D	A	72	B	YES	YES	439320
16	195/65R16C	104/102	T	8PR		D	B	72	B	YES	YES	439324
16	195/75R16C	110/108	R	10PR		C	B	72	B	YES	YES	439330
16	205/65R16C	107/105	T	8PR		D	A	72	B	YES	YES	439325
16	205/75R16C	113/111	R	10PR		C	A	72	B	YES	YES	439333
16	215/60R16C	103/101	T	6PR		D	A	72	B	YES	YES	439322
16	215/65R16C	109/107	T	8PR		D	A	72	B	YES	YES	439327
16	215/75R16C	116/114	R	10PR		C	A	72	B	YES	YES	439334
16	225/65R16C	112/110	T	8PR		C	A	72	B	YES	YES	439332
16	225/75R16C	121/120	R	10PR		C	A	72	B	YES	YES	439335
16	235/65R16C	121/119	R	10PR		C	A	72	B	YES	YES	439321
17	215/60R17C	109/107	T	8PR		D	A	72	B	YES	YES	439328

SUV

TERRAMAX A/T	39
TERRAMAX CVR	41
TERRAMAX M/T	43





TERRAMAX A/T

PERFORMANCE RATINGS

Wet Performance:	8
Dry Performance:	9
Comfort:	7
Noise Absorption:	7
Tread Life:	10



The **TERRAMAX A/T** is designed to deliver superior traction for SUVs, pickups and vans both off and on road. The A/T provides exceptional handling and on-and-off-road stability while maintaining a comfortable ride.



OFF-ROAD DURABILITY

The tread pattern effectively reduces stone retention and is capable of withstanding punctures from harsh road conditions, effectively protecting the tread from damage.

EXTENDED LIFE

The staggered tread blocks promote even tread wear to increase tyre life.



CLAW-LIKE SHOULDER

The aggressive claw-like shoulder effectively dissipates heat for improved long-distance, high-speed travel.

SIDEWALL SHIELD

A shield design at the rim protects the tyre from collisions, impacts, and supports the sidewall.

MOUNTAIN DESIGN

The protruding sidewall mountain design improves sidewall strength and abrasion resistance.



Rim	Size	LI	SR	PR	XL	Fuel efficiency	Wet Grip	Ext. Rolling Noise	Noise Grade	M+S	3PMSF	EPREL Code
15	215/75R15	100	S			D	C	72	B	YES	YES	442360
15	235/70R15	103	S			D	C	72	B	YES	YES	442374
15	235/75R15	109	S		XL	D	C	72	B	YES	YES	441732
15	265/70R15	112	S			D	C	73	B	YES	YES	442377
15	31×10.50R15LT	109	S	6PR		D	A	73	B	Yes	Yes	949117
16	205R16C	110/108	Q	8PR		D	A	73	B	Yes	Yes	949119
16	235/70R16	106	S			D	C	72	B	YES	YES	441653
16	245/70R16	107	S			D	C	72	B	YES	YES	442375
16	245/70R16	111	T		XL	D	C	72	B	YES	YES	442379
16	245/75R16	111	S			D	C	72	B	YES	YES	441747
16	265/70R16	112	T			D	C	73	B	YES	YES	441680
16	265/75R16	116	S			D	C	73	B	YES	YES	441761
16	275/70R16	114	S			D	C	73	B	YES	YES	441719
16	LT265/75R16	123/120	S	10PR		D	B	73	B	YES	YES	446631
16	LT285/75R16	126/123	R	10PR		E	B	72	B	YES	YES	461682
17	235/65R17	104	S			D	C	72	B	YES	YES	441778
17	245/65R17	107	S			D	C	72	B	YES	YES	441792
17	265/65R17	112	S			D	C	73	B	YES	YES	441806
17	265/70R17	115	S			D	C	73	B	YES	YES	441695
17	275/65R17	115	S			D	C	73	B	YES	YES	441823
18	265/60R18	110	T			D	C	73	B	Yes	Yes	949110
18	275/65R18	116	T			D	C	73	B	YES	YES	441886
18	LT265/70R18	124/121	R	10PR		D	B	73	B	YES	YES	446650
18	LT275/65R18	123/120	R	10PR		D	B	73	B	YES	YES	446656
18	LT275/70R18	125/122	R	10PR		D	B	73	B	YES	YES	446676
20	265/50R20	111	T		XL	D	C	73	B	YES	YES	442369
20	275/55R20	117	T		XL	D	C	73	B	YES	YES	441843
20	275/60R20	115	T			D	C	73	B	YES	YES	441865
20	LT275/65R20	126/123	R	10PR		D	B	73	B	YES	YES	446668



ALL-SEASON LUXURY CROSSOVER & SUV TYRE

TERRAMAX CVR

PERFORMANCE RATINGS

Wet Performance:	8
Dry Performance:	9
Comfort:	9
Noise Absorption:	8
Tread Life:	10



The **TERRAMAX CVR** is an all-season tyre specifically engineered for SUVs and crossovers. The CVR delivers exceptional handling and stability for today's crossover vehicles without compromising driving comfort.



DRIVING STABILITY

Large shoulder blocks and center ribs provide responsiveness and high speed stability.



IMPROVED GRIP

Wide tread design offers a larger ground contact area which effectively improves grip performance.



DRIVING COMFORT

Tread design offers greater driving comfort and reduces noise emissions.

WET PERFORMANCE

Four main grooves and small winding lateral grooves reduce rolling resistance and effectively drain water for improved hydroplaning resistance.

EXTENDED LIFE

The strong casing and special tread compound increases service life, driving comfort and overall driving performance.

Rim	Size	LI	SR	PR	XL	Fuel efficiency	Wet Grip	Ext. Rolling Noise	Noise Grade	M+S	3PMSF	EPREL Code
15	205/70R15	96	H			C	D	71	B	YES		441191
15	215/75R15	100	S			C	D	71	B	YES		441538
15	225/75R15	102	S			C	D	71	B	YES		441546
15	235/75R15	105	T			C	D	71	B	YES		441559
16	215/65R16	102	H		XL	D	D	72	B	YES		441390
16	215/70R16	100	H			D	D	71	B	YES		441365
16	235/60R16	100	H			C	D	71	B	YES		441237
16	235/70R16	106	H			C	D	71	B	YES		441280
16	245/70R16	111	H		XL	C	D	72	B	YES		441291
16	245/75R16	111	T			C	D	71	B	YES		441568
16	265/70R16	112	H			C	D	72	B	YES		448736
17	215/60R17	96	H			C	D	71	B	YES		441254
17	225/60R17	99	H			C	D	71	B	YES		441472
17	225/65R17	102	H			C	D	71	B	YES		441266
17	235/55R17	103	V		XL	C	D	72	B	YES		441352
17	235/65R17	108	H		XL	C	D	72	B	YES		441438
18	225/55R18	98	V			D	D	71	B	YES		441411
18	235/55R18	100	V			C	D	71	B	YES		441478
18	235/60R18	103	V			C	D	71	B	YES		441430
18	255/55R18	109	V		XL	C	D	72	B	YES		441421
18	255/65R18	111	T			C	D	72	B	YES		441571
18	255/70R18	113	T			C	D	72	B	YES		441490
19	225/55R19	99	V			C	D	71	B	YES		441516
19	235/50ZR19	99	W			C	D	71	B	YES		441504
19	235/55R19	101	V			C	D	71	B	YES		441525
19	255/50R19	107	V		XL	C	D	72	B	YES		441375
20	255/50R20	109	W		XL	C	D	72	B	YES		441401



MUD-TERRAIN LIGHT TRUCK & SUV TYRE

TERRAMAX M/T

PERFORMANCE RATINGS

Wet Performance:	8
Dry Performance:	9
Comfort:	6
Noise Absorption:	7
Tread Life:	10



OFF-ROAD PERFORMANCE

The z-shaped grooves between blocks are designed to enhance off-road driving capabilities by improving grip and climbing ability.

OFF-ROAD GRIP

Deep grooves allow mud to easily be discharged from the tread at both high and low speeds. The design also offers better grip when traveling on rocky or rugged roads.

OFF-ROAD STABILITY

Large blocks on the shoulder vastly enhance handling on muddy and rock roads.

OFF-ROAD DURABILITY

The shield pattern which extends from the sidewall protects the sidewall from abrasions and increases traction on mud. The carcass is designed with three layers of polyester fabric to make it rugged and resistant to strong impacts.

Rim	Size	LI	SR	PR	XL	Fuel efficiency	Wet Grip	Ext. Rolling Noise	Noise Grade	M+S	3PMSF	EPREL Code
15	30×9.50R15LT	104	Q	6PR		POR	POR	POR	POR	YES		
15	31×10.50R15LT	109	Q	6PR		POR	POR	POR	POR	YES		
15	33×12.50R15LT	108	Q	6PR		POR	POR	POR	POR	YES		
15	35×12.50R15LT	113	Q	6PR		POR	POR	POR	POR	YES		
15	LT235/75R15	104/101	Q	6PR		POR	POR	POR	POR	YES		
16	LT235/85R16	120/116	Q	10PR		POR	POR	POR	POR	YES		
16	LT245/75R16	120/116	Q	10PR		POR	POR	POR	POR	YES		
17	33×12.50R17LT	114	Q	8PR		POR	POR	POR	POR	YES		
17	35×12.50R17LT	121	Q	10PR		POR	POR	POR	POR	YES		
17	LT265/70R17	121/118	Q	10PR		POR	POR	POR	POR	YES		
17	LT285/70R17	121/118	Q	10PR		POR	POR	POR	POR	YES		
18	33×12.50R18LT	118	Q	10PR		POR	POR	POR	POR	YES		
20	33×12.50R20LT	114	Q	10PR		POR	POR	POR	POR	YES		
20	35×12.50R20LT	121	Q	10PR		POR	POR	POR	POR	YES		
20	LT305/55R20	121/118	Q	10PR		POR	POR	POR	POR	YES		

LTC

COMMERCIO PRO

47



COMMERCIO PRO



PERFORMANCE RATINGS

Wet Performance:	9
Dry Performance:	8
Comfort:	8
Noise Absorption:	9
Tread Life:	8

The **COMMERCIO PRO** is the next generation of the COMMERCIO VX1 and is specifically designed for commercial vehicles in the European market. This new generation tyre improves upon load bearing capabilities, durability, driving comfort and safety.



SAFETY

The improved sidewall design improves impact and puncture resistance for overall improved safety.



Less tread block sipes improve block rigidity for better wear resistance while also increasing the ground contact area of the tyre for improved handling performance. Even tread pressure distribution promotes even treadwear and improves durability.



Improved bead structure design effectively increases bead rigidity and reduces heat-buildup for overall better durability and load bearing capabilities.



The connected shoulder grooves and optimized tread pitch effectively reduce noise vibrations and improve driving comfort.

Rim	Size	LI	SR	PR	XL	Fuel efficiency	Wet Grip	Ext. Rolling Noise	Noise Grade	M+S	3PMSF	EPREL Code
14	175/65R14C	90/88	T	6PR		C	A	70	B			1361472
15	195/70R15C	104/102	R	8PR		C	A	70	B			1361477
15	205/65R15C	102/100	T	6PR		C	A	70	B			1361488
15	205/70R15C	106/104	R	8PR		C	A	70	B			1362053
15	215/65R15C	104/102	T	6PR		C	B	72	B			1362062
15	215/70R15C	109/107	S	8PR		C	A	72	B			1362067
15	225/70R15C	112/110	S	8PR		B	A	72	B			1362072
16	195/60R16C	99/97	H	6PR		C	A	70	B			1361473
16	195/65R16C	104/102	T	8PR		C	A	70	B			1361475
16	195/75R16C	107/105	R	8PR		B	A	70	B			1361479
16	195/75R16C	110/108	R	10PR		B	A	70	B			1361481
16	205/65R16C	107/105	T	8PR		B	A	70	B			1361585
16	205/75R16C	113/111	R	10PR		B	B	70	B			1362057
16	215/60R16C	103/101	T	6PR		C	B	72	B			1362059
16	215/65R16C	109/107	T	8PR		B	A	72	B			1362064
16	215/65R16C	106/104	T	6PR		C	A	72	B			1362066
16	215/75R16C	116/114	R	10PR		B	A	72	B			1362069
16	225/65R16C	112/110	R	8PR		B	A	72	B			1362070
16	225/75R16C	121/120	R	10PR		B	A	72	B			1362075
16	225/75R16C	118/116	R	8PR		B	A	72	B			1362077
16	235/65R16C	121/119	R	10PR		B	A	72	B			1362073
17	215/60R17C	109/107	T	8PR		B	A	72	B			1362074

WINTER

ENDURE WSL1	51
ICE BLAZER Alpine +	53
ICE BLAZER Alpine EVO1	55
ICE BLAZER Arctic	57
ICE BLAZER Arctic EVO	59
ICE BLAZER Arctic SUV	61
ICE BLAZER WST2 LT	63
ICE BLAZER WST3	65
COMMERCIO ICE	69



ENDURE WSL1

Ice Performance:	8
Snow Performance:	9
Wet Performance:	9
Comfort:	8
Tread Life:	9

Sailun's answer for commercial light truck vehicles in winter, the **WSL1** is designed with a winter weather compound and a tread pattern that provide optimal grip and stopping power on snow and wet surfaces. WSL1 comes in main commercial sizes ranging from 14in to 16in.



Strengthened tyre structure and wide running surface improve load bearing capabilities by more than 20%.

Enhanced tread contour and tread sipe design effectively help dissipate heat to improve service life.

Tread compound, central ribs and shoulder design work together to improve tyre rigidity for overall greater durability.

Rim	Size	LI	SR	PR	XL	Fuel efficiency	Wet Grip	Ext. Rolling Noise	Noise Grade	M+S	3PMSF	EPRE Code
14	175/65R14C	90/88	T	6PR		D	B	72	B	YES	YES	44423
14	185R14C	102/100	R	8PR		C	B	72	B	YES	YES	44433
14	195R14C	106/104	R	8PR		C	B	72	B	YES	YES	44432
15	195/70R15C	104/102	R	8PR		C	B	72	B	YES	YES	44425
15	205/65R15C	102/100	R	6PR		C	B	72	B	YES	YES	44433
15	205/70R15C	106/104	R	8PR		C	B	72	B	YES	YES	44434
15	215/70R15C	109/107	R	8PR		C	B	72	B	YES	YES	44437
15	225/70R15C	112/110	R	8PR		C	B	72	B	YES	YES	44429
16	185/75R16C	104/102	R	8PR		C	B	72	B	YES	YES	44429
16	195/60R16C	99/97	T	6PR		C	B	72	B	YES	YES	44432
16	195/65R16C	104/102	R	8PR		C	B	72	B	YES	YES	44432
16	195/75R16C	107/105	R	8PR		C	B	72	B	YES	YES	44425
16	205/65R16C	107/105	T	8PR		C	B	72	B	YES	YES	44427
16	205/75R16C	113/111	R	10PR		C	B	72	B	YES	YES	44434
16	215/60R16C	103/101	T	6PR		C	B	72	B	YES	YES	44437
16	215/65R16C	109/107	T	8PR		C	B	72	B	YES	YES	44437
16	215/75R16C	116/114	R	10PR		C	B	72	B	YES	YES	44428
16	225/65R16C	112/110	R	8PR		C	B	72	B	YES	YES	44438
16	225/75R16C	121/120	R	10PR		C	B	72	B	YES	YES	44438
16	235/65R16C	121/119	R	10PR		C	B	72	B	YES	YES	44424
16	235/65R16C	121/119	R	10PR		C	B	72	B	YES	YES	122898



ICE BLAZER ALPINE+



Wet Performance:	8
Dry Performance:	8
Comfort:	8
Noise Absorption:	7
Tread Life:	8
Snow Performance:	8
Ice Performance:	7

The radar chart compares five performance metrics for two tire brands: ALPINE+ (blue line) and K BRAND (red line). The metrics are SNOWACC, SNOW HANDLING, ROLLING RESISTANCE, WET BRAKING, and DRY BRAKING. The scale for each metric ranges from 90 to 130. ALPINE+ shows higher scores in SNOWACC, SNOW HANDLING, and ROLLING RESISTANCE, while K BRAND shows higher scores in WET BRAKING and DRY BRAKING.

Metric	ALPINE+	K BRAND
SNOWACC	115	110
SNOW HANDLING	110	105
ROLLING RESISTANCE	105	100
WET BRAKING	100	105
DRY BRAKING	100	105



The tread is designed with an optimized pitch sequence and profile which reduces wheel vibrations for fewer noise emissions and even tread wear, as well as improving steering response for overall greater driving comfort.



Rim	Size	LI	SR	PR	XL	Fuel efficiency	Wet Grip	Ext. Rolling Noise	Noise Grade	M+S	3PMSF	EPREL Code
13	155/65R13	73	T			E	C	71	B	YES	YES	441271
13	155/70R13	75	T			E	C	71	B	YES	YES	441258
13	155/80R13	79	T			E	C	71	B	YES	YES	441343
13	165/70R13	79	T			E	C	71	B	YES	YES	441376
13	165/70R13	83	T		XL	D	C	71	B	YES	YES	441385
13	175/65R13	80	T			E	C	71	B	YES	YES	441419
13	175/70R13	82	T			E	C	71	B	YES	YES	441437
14	155/65R14	75	T			E	C	71	B	YES	YES	441282
14	165/60R14	79	T		XL	D	C	71	B	YES	YES	441351
14	165/65R14	79	T			E	C	71	B	YES	YES	441369
14	165/70R14	81	T			E	C	71	B	YES	YES	441396
14	175/65R14	82	T			E	C	71	B	YES	YES	441426
14	175/70R14	84	T			E	C	71	B	YES	YES	441449
14	185/55R14	80	T			E	C	71	B	YES	YES	441459
14	185/60R14	82	T			E	C	71	B	YES	YES	441480
14	185/65R14	86	H			E	C	71	B	YES	YES	441506
14	195/65R14	89	T			D	C	72	B	YES	YES	441584
15	175/55R15	77	T			E	C	71	B	YES	YES	441405
15	175/60R15	81	H			E	C	71	B	YES	YES	441409
15	175/65R15	84	T			E	C	71	B	YES	YES	441431
15	185/55R15	82	H			E	C	71	B	YES	YES	441462
15	185/60R15	84	T			D	C	71	B	YES	YES	441486
15	185/60R15	88	T		XL	D	C	71	B	YES	YES	441492
15	185/65R15	88	H			E	C	71	B	YES	YES	441522
15	195/50R15	82	H			E	C	72	B	YES	YES	441540
15	195/55R15	85	H			E	C	72	B	YES	YES	441547
15	195/55R15	89	H		XL	D	C	72	B	YES	YES	441560
15	195/60R15	88	H			D	C	72	B	YES	YES	441579
15	195/65R15	91	T			D	C	72	B	YES	YES	441587
15	195/65R15	95	T		XL	D	C	72	B	YES	YES	441595
15	205/50R15	86	H			D	C	72	B	YES	YES	441611
15	205/60R15	91	H			D	C	72	B	YES	YES	441626
15	205/65R15	94	H			D	C	72	B	YES	YES	441676
15	215/65R15	96	H			D	C	72	B	YES	YES	441688
16	185/55R16	87	H		XL	E	C	71	B	YES	YES	441470
16	195/45R16	84	H		XL	E	C	72	B	YES	YES	441532
16	195/55R16	87	H			D	C	72	B	YES	YES	441574
16	205/45R16	87	H		XL	D	C	72	B	YES	YES	441604
16	205/55R16	94	H		XL	D	C	72	B	YES	YES	441192
16	205/55R16	91	H			D	C	72	B	YES	YES	441738
16	205/55R16	91	T			D	C	72	B	YES	YES	441217
16	205/60R16	92	H			D	C	72	B	YES	YES	441633
16	205/60R16	96	H		XL	D	C	72	B	YES	YES	441665
16	215/60R16	95	H			D	C	72	B	YES	YES	441241
16	215/60R16	99	H		XL	D	C	72	B	YES	YES	441725
16	215/65R16	98	H			D	C	72	B	YES	YES	441694
17	205/50R17	93	H		XL	D	C	72	B	YES	YES	441619



ICE BLAZER ALPINE EVO1



PERFORMANCE RATINGS

Wet Performance:	8
Dry Performance:	9
Comfort:	8
Noise Absorption:	9
Tread Life:	8

This European exclusive UHP winter tyre was developed specifically to provide stability and handling in winter weather conditions for European cars and SUVs. The asymmetric, wide-block pattern balances handling and driving comfort, and increases snow traction for more efficient braking. **Alpine Evo 1** utilizes a winter-weather compound which helps maintain tread softness for maximized grip, reduced rolling resistance, and improved driving comfort.



WINTER PERFORMANCE

The 100% silica compound maximizes grip, offers lower rolling for great fuel economy, reduces wear resistance for longer tyre life, and also maintains softness in a variety of winter weather conditions. The tread pattern utilizes a groove and sipe design that improves traction and braking performance on wet and snowy roads.

WINTER COMFORT

The wide pattern blocks located on the tyre shoulder improve control on dry and snowy roads. The tread profile is designed for optimal handling and driving comfort while the tread pitch sequence effectively reduces wheel vibration to promote even tread wear and a quiet, comfortable drive.

Rim	Size	LI	SR	PR	XL	Fuel efficiency	Wet Grip	Ext. Rolling Noise	Noise Grade	M+S	3PM5F	EPREL Code
16	215/45R16	90	V		XL	D	B	72	B	YES	YES	695169
16	215/55R16	97	H		XL	D	B	72	B	YES	YES	695318
16	215/70R16	100	H			D	B	72	B	YES	YES	695331
16	225/55R16	99	V		XL	D	B	72	B	YES	YES	695345
17	215/45R17	91	V		XL	D	B	72	B	YES	YES	695313
17	215/50R17	95	V		XL	D	B	72	B	YES	YES	695316
17	215/55R17	98	V		XL	D	B	72	B	YES	YES	695319
17	215/60R17	100	V		XL	C	B	72	B	YES	YES	695324
17	215/65R17	99	V			D	B	72	B	YES	YES	695327
17	225/45R17	91	H			E	B	72	B	YES	YES	695337
17	225/45R17	94	V		XL	D	B	72	B	YES	YES	695338
17	225/50R17	98	V		XL	D	B	72	B	YES	YES	695342
17	225/55R17	101	V		XL	D	B	72	B	YES	YES	695346
17	225/60R17	99	H			D	B	72	B	YES	YES	695350
17	225/65R17	106	H		XL	C	B	72	B	YES	YES	695353
17	235/45R17	97	V		XL	D	B	72	B	YES	YES	695356
17	235/55R17	103	V		XL	D	B	72	B	YES	YES	695120
17	235/65R17	108	H		XL	C	B	72	B	YES	YES	695128
17	245/45R17	99	V		XL	D	B	72	B	YES	YES	695134
17	265/65R17	116	H		XL	C	B	72	B	YES	YES	695157
18	215/55R18	99	V		XL	C	B	72	B	YES	YES	695322
18	225/40R18	92	V		XL	D	B	72	B	YES	YES	695333
18	225/45R18	95	V		XL	D	B	72	B	YES	YES	695340
18	225/50R18	99	V		XL	D	B	72	B	YES	YES	695343
18	225/55R18	102	V		XL	D	B	72	B	YES	YES	695348
18	225/60R18	104	V		XL	C	B	72	B	YES	YES	695352
18	235/40R18	95	V		XL	E	B	72	B	YES	YES	695355
18	235/45R18	98	V		XL	D	B	72	B	YES	YES	695099
18	235/50R18	101	V		XL	D	B	72	B	YES	YES	695101
18	235/55R18	104	H		XL	D	B	72	B	YES	YES	695122
18	235/60R18	107	V		XL	D	B	72	B	YES	YES	695125
18	245/40R18	97	V		XL	D	B	72	B	YES	YES	695130
18	245/45R18	100	V		XL	D	B	72	B	YES	YES	695135
18	255/40R18	99	V		XL	D	B	72	B	YES	YES	695140
18	255/45R18	103	V		XL	D	B	72	B	YES	YES	695145
18	255/55R18	109	V		XL	C	B	72	B	YES	YES	695147
18	265/60R18	114	H		XL	C	B	72	B	YES	YES	695156
19	225/40R19	93	W		XL	D	B	72	B	YES	YES	695335
19	235/35R19	91	W		XL	E	B	72	B	YES	YES	695354
19	235/55R19	105	V		XL	C	B	72	B	YES	YES	695123
19	245/45R19	102	W		XL	D	B	72	B	YES	YES	695136
19	255/35R19	96	V		XL	E	B	72	B	YES	YES	695138
19	255/40R19	100	V		XL	D	B	72	B	YES	YES	695142
19	255/50R19	107	V		XL	C	B	72	B	YES	YES	695146
19	255/55R19	111	V		XL	C	B	72	B	YES	YES	695150
19	275/40R19	105	V		XL	D	B	72	B	YES	YES	695162
20	245/40R20	99	W		XL	D	B	72	B	YES	YES	695132
20	275/35R20	102	W		XL	D	B	72	B	YES	YES	695160
20	275/40R20	106	V		XL	D	B	72	B	YES	YES	695165
20	315/35R20	110	V		XL	C	C	73	B	YES	YES	695166



ICE BLAZER ARCTIC

Ice Performance:	9
Snow Performance:	9
Dry Performance:	8
Comfort:	8
Noise Absorption:	8

This studless performance winter tyre is designed with an asymmetric tread pattern which offers greater grip, handling, and braking capabilities for a more focused performance enhancement on ice and snow. The **ICE BLAZER ARCTIC** comes in 28 different common sizes ranging from 14in to 18in.



The z-shaped inner tread elements help to increase the tyre footprint. The high density multi-angle siping improves grip allowing for easier braking on ice and snow.

Various criss-crossing grooves and sipes effectively pack and discharge snow. This improves overall grip for efficient braking and handling on ice and snow.

The groove pattern effectively reduces tyre vibration with its sound absorbing groove design while also efficiently breaking through and discharging ice and snow.



The tread blocks are separated into a dense group of sipes which improve tyre traction on snow and ice. At the base of the sipes is a specialized design which interlocks the sipes to enhance block stiffness for improved tyre endurance and driving performance on wet and dry roads.

Rim	Size	LI	SR	PR	XL	Fuel efficiency	Wet Grip	Ext. Rolling Noise	Noise Grade	M+S	3PMSF	EPREL Code
14	175/70R14	88	T		XL	C	E	70	B	YES	YES	441797
14	185/65R14	86	T			C	E	70	B	YES	YES	443042
14	185/70R14	88	H			C	E	70	B	YES	YES	441836
15	185/60R15	88	H		XL	C	E	70	B	YES	YES	441811
15	185/65R15	88	T			C	E	70	B	YES	YES	441824
15	195/55R15	85	H			C	E	70	B	YES	YES	441848
15	195/60R15	88	T			C	E	70	B	YES	YES	441869
15	195/65R15	91	T			C	E	70	B	YES	YES	442748
15	205/65R15	94	H			C	E	70	B	YES	YES	442779
15	205/70R15	96	T			C	E	70	B	YES	YES	442785
16	205/55R16	94	H		XL	C	E	70	B	YES	YES	442767
16	205/60R16	96	H		XL	C	E	70	B	YES	YES	442772
16	215/55R16	97	H		XL	C	E	70	B	YES	YES	442806
16	215/60R16	99	H		XL	C	E	70	B	YES	YES	442818
16	225/55R16	99	H		XL	C	E	72	B	YES	YES	442836
17	205/50R17	89	H			C	E	70	B	YES	YES	443034
17	215/45R17	87	H			C	E	70	B	YES	YES	442789
17	215/50R17	91	T			C	E	70	B	YES	YES	442796
17	215/55R17	94	H			C	E	70	B	YES	YES	442810
17	215/55R17	98	H		XL	C	E	70	B	YES	YES	443048
17	225/45R17	91	H			C	E	72	B	YES	YES	442822
17	225/45R17	94	H		XL	C	E	72	B	YES	YES	443053
17	225/50R17	98	H		XL	C	E	72	B	YES	YES	442833
17	225/55R17	97	H			C	E	72	B	YES	YES	442839
17	225/55R17	101	H		XL	C	E	72	B	YES	YES	443061
17	225/55RF17	101	H		XL	C	E	72	B	YES	YES	442843
17	235/45R17	94	H			C	E	72	B	YES	YES	442849
18	225/45R18	95	H		XL	C	E	72	B	YES	YES	442828
18	235/45R18	98	H		XL	C	E	72	B	YES	YES	442993
18	245/45R18	100	H		XL	C	E	72	B	YES	YES	443018
18	245/45RF18	100	H		XL	C	E	72	B	YES	YES	443027



STUDLESS WINTER TYRE

ICE BLAZER ARCTIC EVO



PERFORMANCE RATINGS

Ice Performance:	9
Snow Performance:	9
Dry Performance:	8
Comfort:	8
Noise Absorption:	8

This studless ultra high-performance winter tyre is designed with an asymmetric tread pattern which offers greater grip, handling, and braking capabilities for a more focused performance enhancement on ice and snow. The **ICE BLAZER ARCTIC EVO** comes in 24 different sizes ranging from 18in to 21in, including 3 runflat sizes.

INNER TREAD ELEMENTS

Staggered narrow grooves improve traction for safer driving on ice and snow.

OUTER TREAD ELEMENTS

Wide shoulder blocks deliver more effective traction for enhanced braking performance when driving on ice and snow.



INTERLOCKED SIPES

Tread blocks are separated by a dense group of jagged sipes which bite into ice and snow for improved traction. These sipes are also interlocked to enhance block stiffness for greater driving performance in wet and dry conditions.

INNER SHOULDER GROOVES

Jagged shoulder grooves effectively grip to ice and snow for enhanced traction.

OUTER SHOULDER DESIGN

The special outside shoulder design improves grip in deep snow for overall safer driving.

Rim	Size	LI	SR	PR	XL	Fuel efficiency	Wet Grip	Ext. Rolling Noise	Noise Grade	M+S	3PMSF	EPREL Code
18	225/50R18	99	V		XL	C	E	72	B	YES	YES	444031
18	225/55R18	102	H		XL	C	E	72	B	YES	YES	444050
18	225/60R18	100	T			C	E	72	B	YES	YES	444059
18	235/50R18	101	H		XL	C	E	72	B	YES	YES	444044
18	245/50RF18	100	V			C	E	72	B	YES	YES	732134
18	245/60R18	105	H			C	E	72	B	YES	YES	444069
18	265/60R18	110	T			C	E	72	B	YES	YES	444077
19	225/45R19	96	V		XL	C	E	72	B	YES	YES	444112
19	225/55R19	99	H			C	E	72	B	YES	YES	444157
19	235/40R19	96	T		XL	C	E	72	B	YES	YES	444288
19	235/50R19	103	H		XL	C	E	72	B	YES	YES	444141
19	235/55R19	101	H			C	E	72	B	YES	YES	444167
19	245/45R19	102	V		XL	C	E	72	B	YES	YES	444127
19	245/45RF19	102	V		XL	C	E	72	B	YES	YES	444119
19	245/55R19	103	H			C	E	72	B	YES	YES	444195
19	255/45R19	104	V		XL	C	E	72	B	YES	YES	444132
19	255/50R19	107	H		XL	C	E	72	B	YES	YES	444148
19	255/55R19	111	H		XL	C	E	72	B	YES	YES	444214
19	275/40R19	105	V		XL	C	E	72	B	YES	YES	444107
19	275/40RF19	105	V		XL	C	E	71	B	YES	YES	444082
20	235/55R20	105	V		XL	C	E	72	B	YES	YES	444270
20	245/50R20	102	H			C	E	72	B	YES	YES	444239
20	255/45R20	105	T		XL	C	E	72	B	YES	YES	444300
20	255/50R20	109	H		XL	C	E	72	B	YES	YES	444249
20	255/55R20	110	V		XL	C	E	72	B	YES	YES	444275
20	275/40R20	106	V		XL	B	E	72	B	YES	YES	444227
20	275/45R20	110	T		XL	C	E	72	B	YES	YES	444306
20	275/50R20	113	V		XL	C	E	72	B	YES	YES	444263
21	275/45R21	110	V		XL	C	E	72	B	YES	YES	444283



ICE BLAZER ARCTIC SUV



Ice Performance:	9
Snow Performance:	9
Dry Performance:	8
Comfort:	9
Noise Absorption:	8

This studless performance winter tyre is focused on providing a more comfortable and efficient drive with a tread pattern and shoulder design that offers consistent grip and increases the tyre's contact area for greater control on ice and snow. The **ICE BLAZER ARCTIC SUV** comes in 13 different sizes at 16in, 17in, and 18in.

The tread block sipes are designed to improve grip on both ice and snow.



The overall shoulder design increases handling for improved driving comfort and ensures consistent performance throughout the tyre's lifetime. The specialized shoulder block design enlarges the tyre contact area and enhances lateral traction.



Rim	Size	LI	SR	PR	XL	Fuel efficiency	Wet Grip	Ext. Rolling Noise	Noise Grade	M+S	3PMSF	EPRE Code
16	215/65R16	98	H			C	E	72	B	YES	YES	44125
16	215/65R16	102	H		XL	C	E	72	B	YES	YES	44138
16	235/70R16	106	S			C	E	72	B	YES	YES	44135
16	245/70R16	107	S			C	E	72	B	YES	YES	44135
17	215/60R17	96	T			C	E	72	B	YES	YES	44124
17	215/60R17	100	T		XL	C	E	72	B	YES	YES	44138
17	215/65R17	99	T			C	E	72	B	YES	YES	44137
17	225/60R17	99	T			C	E	72	B	YES	YES	44126
17	225/60R17	103	T		XL	C	E	72	B	YES	YES	44139
17	225/65R17	102	S			C	E	72	B	YES	YES	44126
17	235/55R17	99	H			C	E	72	B	YES	YES	44129
17	235/55R17	103	H		XL	C	E	72	B	YES	YES	44140
18	215/55R18	99	H		XL	C	E	72	B	YES	YES	44119
18	235/55R18	104	H		XL	C	E	72	B	YES	YES	44128
18	235/60R18	107	T		XL	C	E	72	B	YES	YES	44134
18	235/65R18	106	T			C	E	72	B	YES	YES	44134
18	255/55R18	109	H		XL	C	E	72	B	YES	YES	44136



ICE BLAZER WST2 LT

PERFORMANCE RATINGS

Ice Performance:	9
Snow Performance:	9
Dry Performance:	7
Comfort:	7
Noise Absorption:	7



A studdable winter tyre designed for light trucks, the **WST2 LT** maintains maximum traction while tackling the toughest on-off road conditions, whether it be snow, ice, or mud.



WINTER SAFETY

Specially formulate LT tread compound allows the rubber to maintain flexibility for excellent performance in extreme temperatures. Improves safety and handling in extreme weather conditions (designated with the Severe Service Emblem).

WINTER GRIP

Angled groove design efficiently drains slush and water to maximize grip and handling.

DRIVING COMFORT

Variable pitch design is optimized to reduce noise emissions for a more quite and comfortable ride.

Rim	Size	LI	SR	PR	XL	Fuel efficiency	Wet Grip	Ext. Rolling Noise	Noise Grade	M+S	3PMSF	EPRE Code
17	245/70R17	110	S			D	D	72	B	YES	YES	44594
17	265/70R17	115	S			D	D	73	B	YES	YES	44613
18	235/60R18	107	T		XL	D	D	72	B	YES	YES	44605
18	235/65R18	106	T			D	D	72	B	YES	YES	44607
18	245/60R18	105	T			D	D	72	B	YES	YES	44610
18	255/70R18	113	S			D	D	73	B	YES	YES	44615
18	265/60R18	110	T			D	D	73	B	YES	YES	44611
18	265/65R18	114	T			D	D	73	B	YES	YES	44614
18	275/65R18	116	S			C	D	73	B	YES	YES	44611
18	LT265/70R18	124/121	R	10PR		E	C	72	B	YES	YES	44600
18	LT275/65R18	123/120	R	10PR		E	C	72	B	YES	YES	44598
18	LT275/70R18	125/122	R	10PR		E	C	72	B	YES	YES	44601
20	245/50R20	102	T			D	D	72	B	YES	YES	44616
20	275/55R20	117	S		XL	C	D	73	B	YES	YES	44604
20	275/60R20	119	S		XL	C	D	73	B	YES	YES	44614



STUDDBLE WINTER TYRE

ICE BLAZER WST3

PERFORMANCE RATINGS

Ice Performance:	9
Snow Performance:	9
Dry Performance:	8
Comfort:	8
Noise Absorption:	8



Introducing the next generation to the acclaimed WST1, the **ICE BLAZER WST3**, a studdable winter tyre which brings improved traction on snow and ice thanks to a larger number of studs and the improved pattern design. The WST3 employs a variation of the Sailun Nordic compound which allows the tyre to maintain hardness and flexibility in extremely cold weather conditions offering improved grip.



WINTER TRACTION

The unidirectional tread pattern is designed with more lateral and transverse grooves compared to WST1. This improves the evacuation of snow, slush and water for improved traction and braking performance.

ICE GRIP

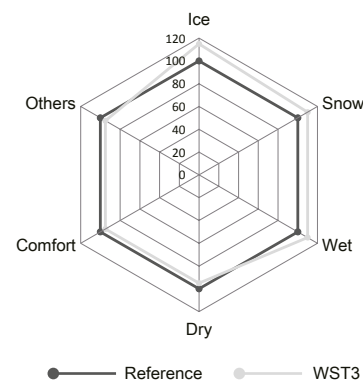
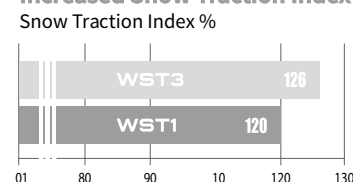
The WST3 stud pattern is meticulously arranged in a variable sequence to improve the number of studs. This improvement along with new stud holding and padding designs ensure maximum grip on ice.

WINTER HANDLING

Multi-layer sipes and saw-tooth blocks improve steering and stability on snow and ice.

ICE BLAZER WST3 Formula Intro

Increased Snow Traction Index in Pattern Design



Rim	Size	LI	SR	PR	XL	Fuel efficiency	Wet Grip	Ext. Rolling Noise	Noise Grade	M+S	3PMSF	EPREL Code
13	155/70R13	75	T			E	D	71	B	YES	YES	441246
13	155/80R13	79	T			E	D	71	B	YES	YES	441852
13	165/70R13	79	T			E	D	71	B	YES	YES	442744
13	165/80R13	83	T			D	D	71	B	YES	YES	442771
13	175/70R13	82	T			E	D	71	B	YES	YES	441304
14	155/65R14	75	T			E	D	71	B	YES	YES	442697
14	165/65R14	79	T			E	D	71	B	YES	YES	443029
14	175/65R14	86	T		XL	E	D	71	B	YES	YES	441543
14	175/70R14	84	T			D	D	71	B	YES	YES	442685
14	185/60R14	82	T			D	D	71	B	YES	YES	443050
14	185/65R14	90	T		XL	D	D	71	B	YES	YES	441663
14	185/70R14	92	T		XL	D	D	71	B	YES	YES	441746
14	185/80R14	91	Q			D	D	71	B	YES	YES	443058
15	175/65R15	84	T			D	D	71	B	YES	YES	443039
15	185/55R15	86	T		XL	D	D	71	B	YES	YES	441623
15	185/60R15	88	T		XL	D	D	71	B	YES	YES	441730
15	185/65R15	92	T		XL	D	D	71	B	YES	YES	441505
15	195/60R15	88	T			D	D	72	B	YES	YES	443065
15	195/65R15	95	T		XL	D	D	72	B	YES	YES	441496
15	205/65R15	94	T			C	D	72	B	YES	YES	442660
15	205/70R15	100	T		XL	D	D	72	B	YES	YES	441610
15	215/65R15	96	T			C	D	72	B	YES	YES	443124
15	215/70R15	98	T			C	D	72	B	YES	YES	443151
15	235/75R15	105	S			C	D	72	B	YES	YES	442720
16	205/50R16	87	T			D	D	72	B	YES	YES	443075
16	205/55R16	94	T		XL	D	D	72	B	YES	YES	441471



ICE BLAZER WST3

Ice Performance:	9
Snow Performance:	9
Dry Performance:	8
Comfort:	8
Noise Absorption:	8

Rim	Size	LI	SR	PR	XL	Fuel efficiency	Wet Grip	Ext. Rolling Noise	Noise Grade	M+S	3PMSF	EPREL Code
16	205/60R16	96	T		XL	C	D	72	B	YES	YES	441575
16	205/65R16	95	T			D	D	72	B	YES	YES	443089
16	215/55R16	97	T		XL	C	D	72	B	YES	YES	442783
16	215/60R16	99	T		XL	D	D	72	B	YES	YES	441696
16	215/65R16	102	T		XL	C	D	72	B	YES	YES	441554
16	215/70R16	100	T			C	D	72	B	YES	YES	441873
16	225/55R16	99	T		XL	D	D	72	B	YES	YES	442790
16	225/60R16	98	T			C	D	72	B	YES	YES	443165
16	225/70R16	103	T			D	D	72	B	YES	YES	443170
16	235/60R16	100	S			C	D	72	B	YES	YES	443936
16	235/70R16	106	T			C	D	72	B	YES	YES	443215
16	235/75R16	108	T			C	D	72	B	YES	YES	443223
16	245/70R16	107	T			D	D	72	B	YES	YES	442733
16	245/75R16	111	S			C	D	72	B	YES	YES	443271
16	255/70R16	111	T			C	D	73	B	YES	YES	443881
16	265/70R16	112	T			C	D	73	B	YES	YES	443889
16	275/70R16	114	T			C	D	73	B	YES	YES	443329
17	215/45R17	91	T		XL	D	D	72	B	YES	YES	443106
17	215/50R17	95	T		XL	C	D	72	B	YES	YES	442777
17	215/55R17	98	T		XL	D	D	72	B	YES	YES	441589
17	215/60R17	100	T		XL	C	D	72	B	YES	YES	441583
17	215/65R17	99	T			C	D	72	B	YES	YES	443140
17	225/45R17	94	T		XL	D	D	72	B	YES	YES	441203
17	225/50R17	98	T		XL	D	D	72	B	YES	YES	441289
17	225/55R17	101	T		XL	C	D	72	B	YES	YES	441685
17	225/60R17	103	T		XL	C	D	72	B	YES	YES	441517
17	225/65R17	102	T			C	D	72	B	YES	YES	442707
17	235/45R17	97	T		XL	D	D	72	B	YES	YES	442808
17	235/55R17	103	T		XL	D	D	72	B	YES	YES	441632



Rim	Size	LI	SR	PR	XL	Fuel efficiency	Wet Grip	Ext. Rolling Noise	Noise Grade	M+S	3PMSF	EPREL Code
17	235/60R17	102	T			C	D	72	B	YES	YES	443209
17	235/65R17	104	T			C	D	72	B	YES	YES	441866
17	245/65R17	107	T			C	D	72	B	YES	YES	443260
17	245/70R17	110	S			C	D	72	B	YES	YES	443925
17	255/65R17	114	T		XL	C	D	73	B	YES	YES	443286
17	265/65R17	112	T			C	D	73	B	YES	YES	443311
17	265/70R17	115	S			C	D	73	B	YES	YES	443320
18	215/55R18	95	T			D	D	72	B	YES	YES	443113
18	225/40R18	92	H		XL	D	D	72	B	YES	YES	441270
18	225/45R18	95	T		XL	D	D	72	B	YES	YES	442981
18	225/55R18	102	T		XL	C	D	72	B	YES	YES	441646
18	225/60R18	104	T		XL	C	D	72	B	YES	YES	441714
18	235/50R18	101	T		XL	C	D	72	B	YES	YES	443197
18	235/55R18	100	T			C	D	72	B	YES	YES	442759
18	235/60R18	103	T			C	D	72	B	YES	YES	442675
18	245/40R18	97	T		XL	D	D	72	B	YES	YES	443228
18	245/45R18	100	T		XL	D	D	72	B	YES	YES	443236
18	255/55R18	105	T			C	D	73	B	YES	YES	442764
18	275/65R18	116	T			C	D	73	B	YES	YES	443916
19	235/35R19	91	T		XL	D	D	72	B	YES	YES	443186
19	235/55R19	101	T			C	D	72	B	YES	YES	443203
19	255/45R19	104	T		XL	C	D	73	B	YES	YES	443278
19	255/50R19	107	T		XL	C	D	73	B	YES	YES	442799
19	265/50R19	110	T		XL	C	D	73	B	YES	YES	443301
20	255/35R20	97	T		XL	D	D	73	B	YES	YES	443873
20	275/40R20	106	T		XL	C	D	73	B	YES	YES	443015
20	275/55R20	117	T		XL	B	D	73	B	YES	YES	443898
20	275/60R20	115	T			C	D	73	B	YES	YES	443906
20	315/35R20	110	T		XL	C	D	74	B	YES	YES	443353



STUDDBLE WINTER TYRE

COMMERCIO ICE

PERFORMANCE RATINGS

Ice Performance:	8,5
Snow Performance:	8,5
Wet Performance:	7
Comfort:	9
Tread Life:	8

Specially designed winter tyre for vans, the **COMMERCIO ICE** is Sailun's next generation of the SW15 that improves upon load bearing capabilities, comprehensive winter performance, and offers a more modern design.

COMMERCIAL PERFORMANCE

Tread grooves are designed with interconnected ribs to improve overall load bearing capabilities and tread block hardness.

WINTER PERFORMANCE

A new tread rubber compound improves wet grip and braking while also offering exceptional traction in low winter temperatures. Directional tread pattern improves water and snow drainage for better handling in wet conditions.

WINTER SAFETY

Tread sipes offer exceptional grip, a noticeable improvement in winter handling, and a shortened braking distance for better safety in winter weather applications. The thick, all-encompassing sidewall design effectively protects the carcass by improving impact and tear resistance.

EXTREME WINTER PERFORMANCE

Studs are optimally arranged for exceptional handling and braking performance in winter weather applications. They are also made of a more sturdy metal to reduce the chances of dislodging. The design around the studs not only improves tyre aesthetics, but also absorbs small bits of sand and ice to reduce the chances of studs dislodging.



TYRE SIDEWALL PROTECTION

The thick, all-encompassing design on the sidewall effectively protects the carcass by improving impact and tear resistance.

Rim	Size	LI	SR	PR	XL	Fuel efficiency	Wet Grip	Ext. Rolling Noise	Noise Grade	M+S	3PMSF	EPREL Code
14	185R14C	102/100	Q	8PR		D	C	72	B	YES	YES	1345595
15	195/70R15C	104/102	R	8PR		D	C	72	B	YES	YES	1345614
15	205/70R15C	106/104	R	8PR		C	C	72	B	YES	YES	1346983
15	215/70R15C	109/107	R	8PR		C	C	72	B	YES	YES	1345622
15	225/70R15C	112/110	R	8PR		C	C	72	B	YES	YES	1346989
16	185/75R16C	104/102	R	8PR		E	C	72	B	YES	YES	1345599
16	195/60R16C	99/97	S	6PR		D	C	72	B	YES	YES	1345608
16	195/65R16C	104/102	R	8PR		D	C	72	B	YES	YES	1345611
16	195/75R16C	107/105	R	8PR		E	C	72	B	YES	YES	1345615
16	205/65R16C	107/105	R	8PR		D	C	72	B	YES	YES	1347001
16	205/75R16C	110/108	R	8PR		C	C	72	B	YES	YES	1346985
16	215/65R16C	109/107	R	8PR		D	C	72	B	YES	YES	1346986
16	215/75R16C	116/114	R	10PR		C	C	72	B	YES	YES	1346987
16	225/65R16C	112/110	R	8PR		C	C	72	B	YES	YES	1346988
16	235/65R16C	121/119	R	10PR		C	C	72	B	Yes	Yes	1346991
17	215/60R17C	109/107	T	8PR		C	C	72	B	YES	YES	1346990

PC TYRES



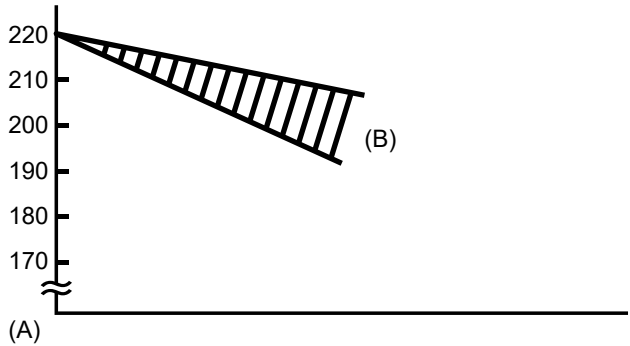
Important Tips for Optimal Tyre Performance:

- 1 Maintain optimum air pressure
- 2 Inspect tread grooves to ensure tyres are safe and legal
- 3 Visually check for tyre damage

Ensure you check your tyres once a month and before long trips to maintain performance and ensure safety

Why is it important I have the correct tyre pressure?

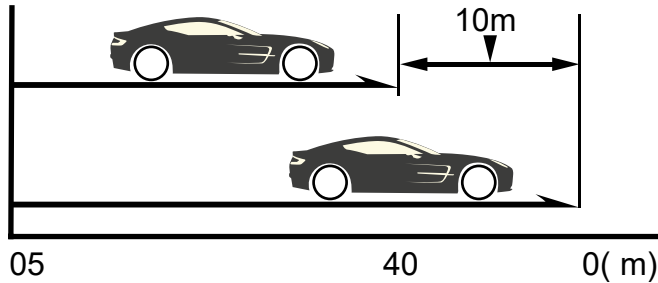
A tyre at optimum air pressure should will ensure more safety, provide greater driving performance, improve tyre life and reduce fuel consumption. Tyre air pressure decreases naturally (little by little). It is generally accepted that air pressure in tyres on a passenger car decreases by 5–10% (10–20kPa) every month.



Tyre size: 195/65R 15
Starting pressure: 220kPa (100kPa=1.0kgf/cm2)
(A) Air pressure (kPa)
(B) Decreases by 10-20kPa a moth

Dangers of Using Worn Tyre

Worn tyres need a longer stopping distance on wet roads.



At the same speed (80km/h) and form the same braking point, there is a difference of 10 meters!
(A) New tyre
(B) Worn tyre (worn out to 1.6mm)

Why is Important I Check for Tyre Wear?

The deeper the groove, which is on the surface of the tyre, the more grip a tyre will have. As your tread pattern wears over time, the grip will begin to decrease. Never use a tyre where even just one tread wear indicator is exposed.

TWI: Tread Wear Indicator (1.6mm)



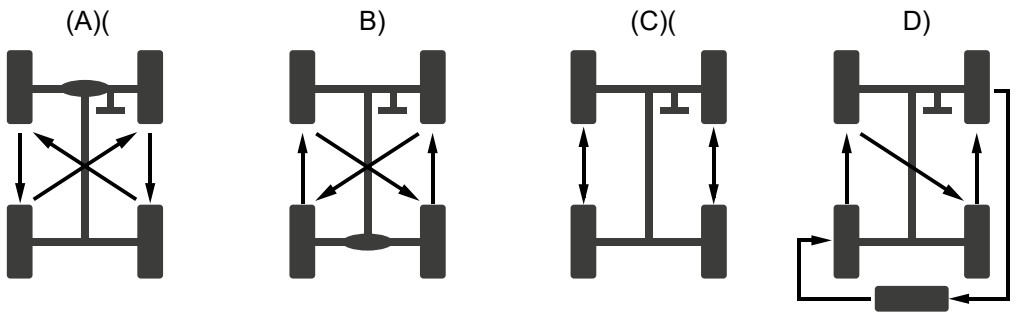
Indicator Mark: Triangle Symbol “ Δ ”

<Tyre Tread Wear Indicator>

What are the advantages of tyre rotation?

- 1 Help Prevent Uneven Tread Wear
- 2 Extension of Tyre Service Life (money in your wallet)
- 3 Averaging of Tyre Fatigue

Note: The front-wheel tyres of an FF vehicle wear two or three times faster than the rear-wheel tyres because the front-wheel tyres function for both driving and steering.



Examples of Tyre Rotation

(A) FF Vehicle (B) FR Vehicle (C) Tyres with Directional Patterns (D) Spare Tyre Included

NOTES

NOTES